

CERTIFICATE OF LOCATION OF GOVERNMENT CORNER

County of Anoka

State of Minnesota

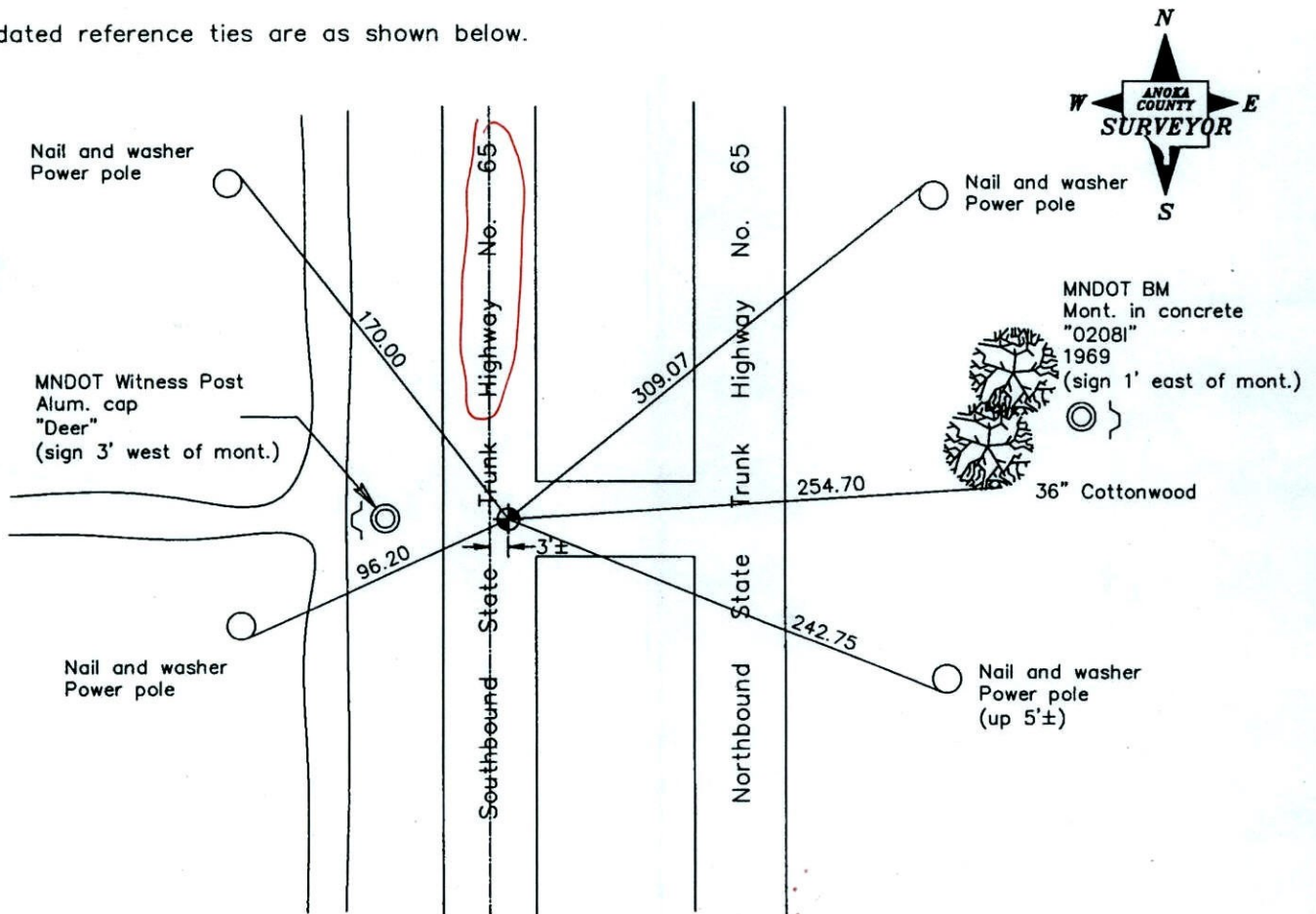
North 1/4 Corner of Sec. 32 Township 32 Range 23

On the 8th day of May, 1963, the described corner was evidenced by a P.K. nail set by highway department

and to perpetuate the location of said corner, at the exact location thereof, a permanent marker was placed consisting of a cast iron monument

AND on the 28th day of August, 2006, said permanent marker was found

Updated reference ties are as shown below.



Revised date

7/20/81
10/24/90
8/13/96
8/28/06

N.A.D. 1983 Coordinates
(1996 Adjustment)

County Project Coordinates	
Northing	169579.7477
Easting	508168.1655
Date	8/28/06

I hereby certify that this United States public land survey monument record is correct and complete to the best of my knowledge and belief.

Larry D. Hoiium Date 6/27/06

Larry D. Hoiium, Anoka County Surveyor

Minnesota License Number 18165

CERTIFICATE OF LOCATION OF GOVERNMENT CORNER

County of Anoka

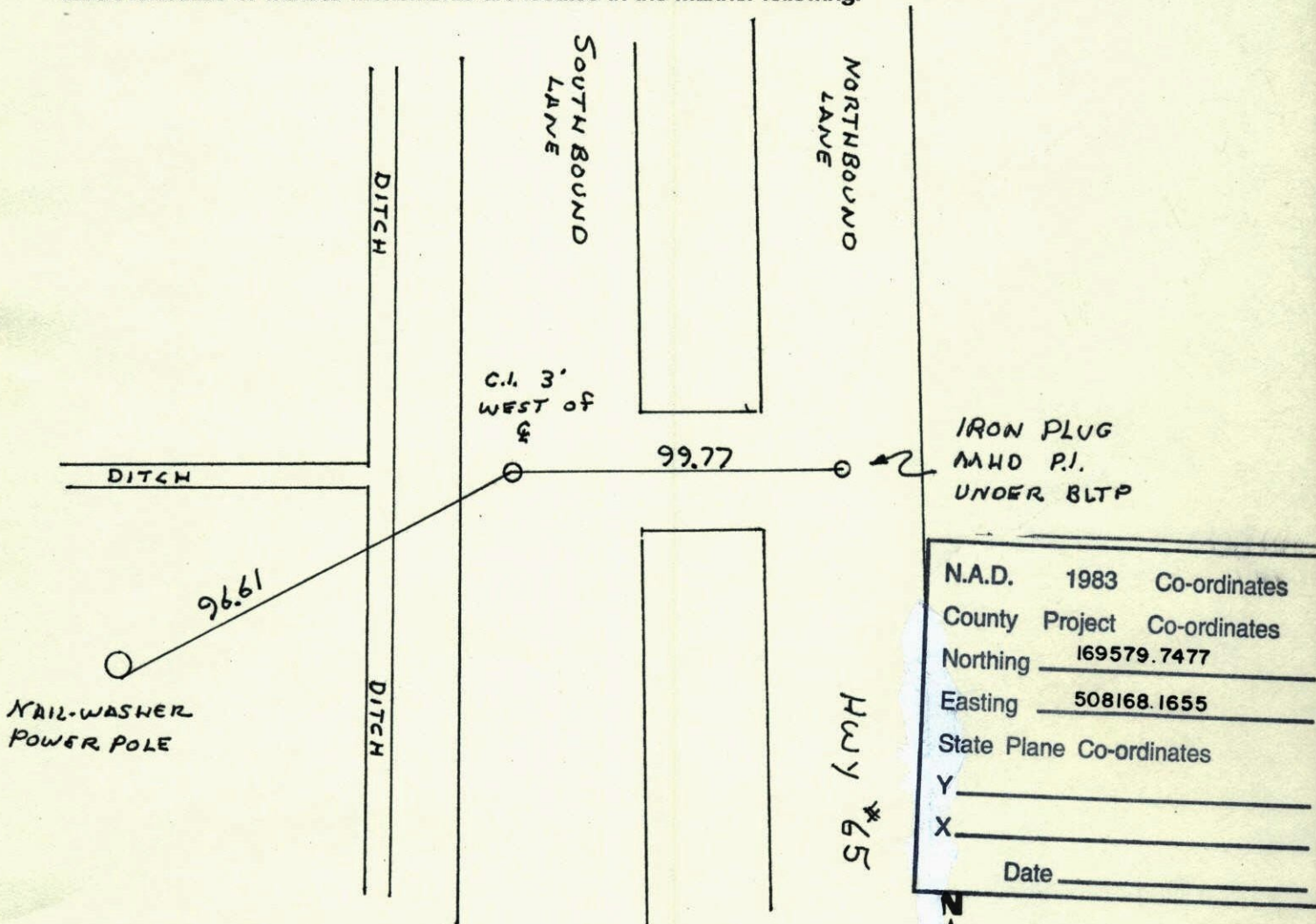
State of Minnesota

NORTH 1/4 Corner of Sec. 32 Township 32 Range 23

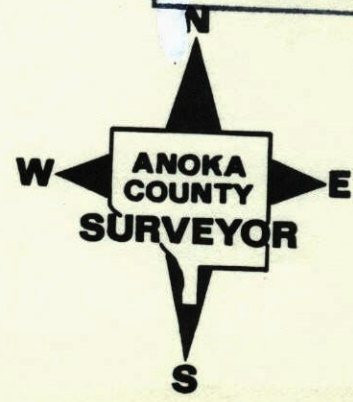
I hereby certify that on the 8 day of MAY, 19 63, I found the described corner which was evidenced by PK BY HWY DEPT.

and I further certify that to perpetuate the location of said corner, I did, at the exact location thereof, place a permanent marker consisting of CAST IRON MONUMENT DOWN .4'±

which reference or witness monuments are located in the manner following:



Revised date	Revised date	Revised date
7-20-81		
10-24-90		
8-13-96		

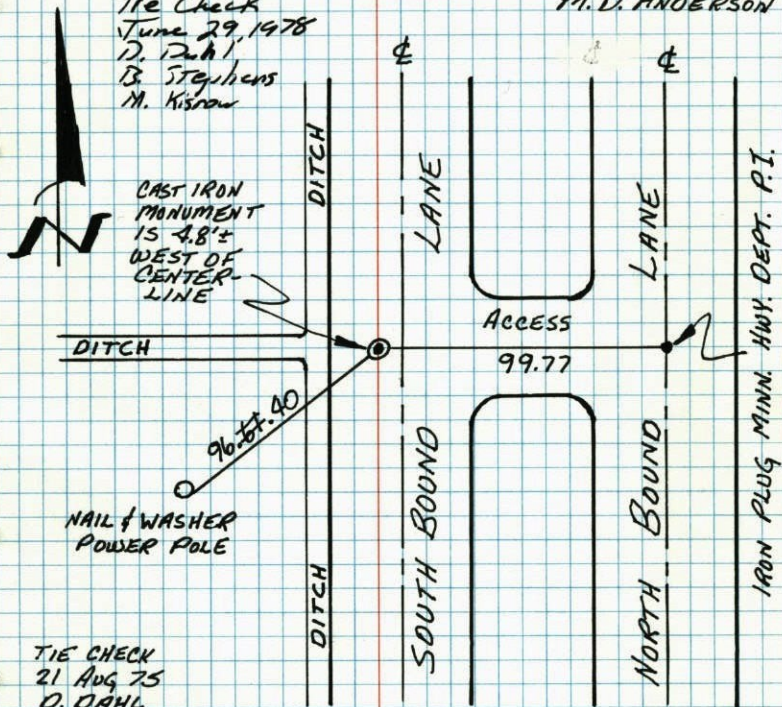


N¹/₄ COR. SEC. 32, T32, R23

SET CAST IRON MONUMENT FLUSH IN PLACE OF HIGHWAY DEPARTMENT P.I. WHICH IS ALSO $\frac{1}{4}$ SECTION CORNER (FOUND HUB AND TACK IN PLACE UNDER 8" OF BLACKTOP). 8 MAY 63

J. OLIVER
M. D. ANDERSON

TIE CHECK
June 29, 1978
D. Dahl
B. Stephens
M. Kishaw



TIE CHECK
21 Aug 75
D. DAHL
B. SANNERUD
G. ADAMS

TIE CHECK
July 11, 1984
G. Lips
D. Bess
R. Bennett

TEMPERATURE CORRECTED
AND HORIZONTALLY
TAPED MEASUREMENTS

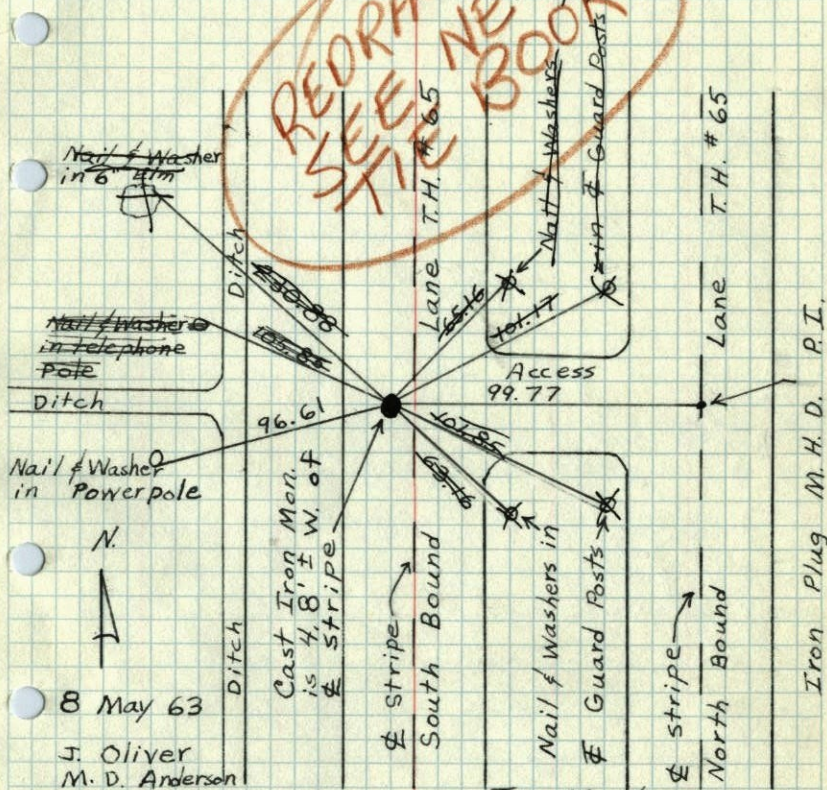
ROLAND W. ANDERSON
COUNTY SURVEYOR
ANOKA COUNTY, MINNESOTA

REDRAWN
JAN '77
G. GUETZKO

MINN.
HWY. #65

N¹/₄ Cor. Sec 32, T 32, R 23

Set Cast Iron Monument flush in place of Highway Dept. P.I. which is also $\frac{1}{4}$ Section Corner (Found Hub and Tack in place under 8" of Blacktop)



8 May 63

J. Oliver
M. D. Anderson

TEMPERATURE CORRECTED
AND HORIZONTALLY
TAPED MEASUREMENTS

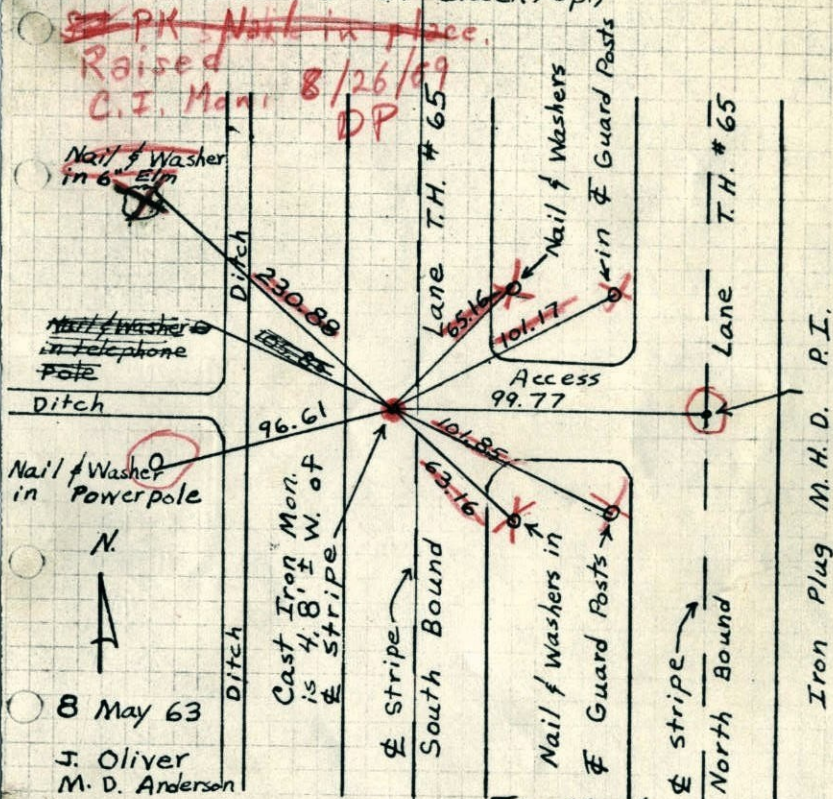
ROLAND W. ANDERSON
COUNTY SURVEYOR
ANOKA COUNTY, MINNESOTA

Tie Check
Aug. 9, 1966
H. Larsen
D. Potter
G. Reimer

Raised C.I.
Aug. 21, 1975
D. Dahl

111
 N 1/4 Cor. Sec 32, T 32, R 23

Set Cast Iron Monument flush in place
 of Highway Dept. P.I. which is also
 Section Corner (Found Hub and Tack in
 place under 8" of Blacktop.)



8 May 63
 J. Oliver
 M. D. Anderson

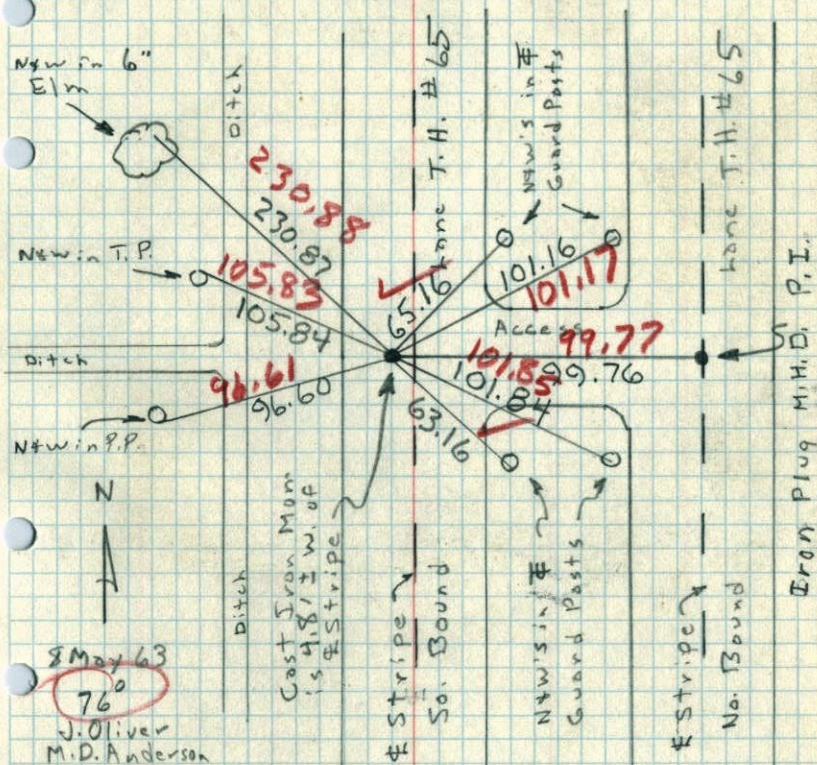
TEMPERATURE CORRECTED
 AND HORIZONTALLY
 TAPED MEASUREMENTS

Tie Check
 Aug. 9, 1966
 H. Larson
 D. Potter
 G. Reimer

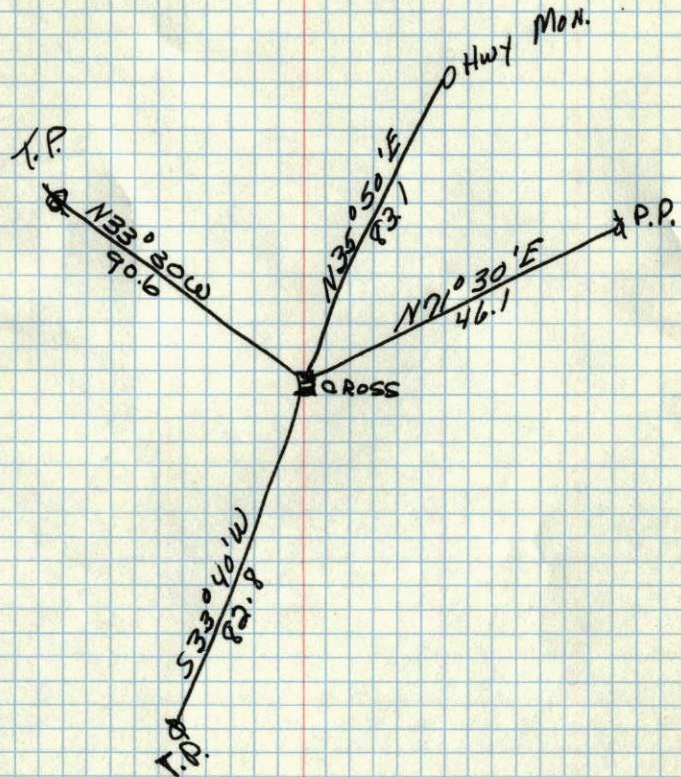
ROLAND W. ANDERSON
 COUNTY SURVEYOR
 ANOKA COUNTY, MINNESOTA

111
 N 1/4 Cor. Sec. 32, T 32, R 23

Set Cast Iron Monument flush in place
 of Highway Dept. P.I. which is also
 Section Corner (Found Hub and Tack in
 place under 8" of Blacktop.)



N
32
117 69 ✓
S¹/₄ COR. of Sec. 29 T. 32 R. 23
CROSS in Pavement from Hwy Notes



JAN. 12. 1945
CARTWRIGHT